

# CREATING SUSTAINABLE COMMUNITY OUTCOMES INFORMATION FOR RED BUS CDC NSW SUPPLIERS



## ABOUT RED BUS CDC NSW

Serving the Central Coast and Bateau Bay area, Red Bus CDC NSW is a joint venture between CDC NSW and Red Bus Services, bringing together decades of experience and a rich family legacy to provide exceptional bus services.

Our commitment extends beyond transportation, as we strive to enhance the lives of individuals by delivering safe, reliable, and punctual connections that facilitate seamless travel experiences.

The Entrance Red Bus Services Pty Ltd ("Red Bus") is one of the oldest bus operators in Australia. It is a family-owned

business that has been operating bus services on the Central Coast, north of Sydney, since January 1940. At that time, the company ran five buses operated by members of the Sloman family and three external employees. Red Bus Services employs 160 employees with over 100 buses in total. In addition to operating the Outer Metropolitan Region Bus Contract (across the breadth of the Coast, from Gosford in the South, Lake Haven in the North, Bateau Bay in the East, and Ourimbah and Wyong in the West), Red Bus Services operates coaches servicing the local community for charter and tourist needs.

## OUR COMMITMENTS

### Social commitments

Red Bus CDC NSW is committed to creating opportunities for all members of the community. This includes promoting a diverse and inclusive culture within our organisation and working with other like-minded businesses.

We are committed to creating opportunities for:

- Aboriginal people and businesses
- People with disability
- People from culturally and linguistically diverse (CALD) backgrounds, including refugees/displaced people
- Young people

- Women in leadership roles and non-traditional trades
- People from the LGBTQIA+ community.

### Environmental commitments

Transport in Australia's represents is the third largest source of greenhouse gas emissions, representing 19%<sup>1</sup> of our emissions. We are aware of the role that we must play to ensure a sustainable future for the next generations. We are committed to reducing our carbon footprint and increasing the circular use of resources within our operations and our supply chain by creating strong partnerships with our vendors.

<sup>1</sup> DCCEEW. Quarterly Update of Australia's National Greenhouse Gas Inventory: September 2022. 2023.

## Acknowledgment of Country

ComfortDelGro Corporation Australia (CDC) acknowledges the Traditional Custodians throughout Australia, and their continuing connection to land, waters and community. We pay our respects to all First Nations people, their culture and to Elders past and present.

Artwork: Luke Penrith, *Connecting to Country and People*, 2022



# COMMITMENT TO ABORIGINAL PARTICIPATION

Our vision is to create and maintain a culturally inclusive and educated organisation while being a partner that supports, understands, and respects the aspirations of Aboriginal and Torres Strait Islander peoples.

Our commitments support the NSW Government's Aboriginal Procurement Policy (APP) and other relevant initiatives such as:

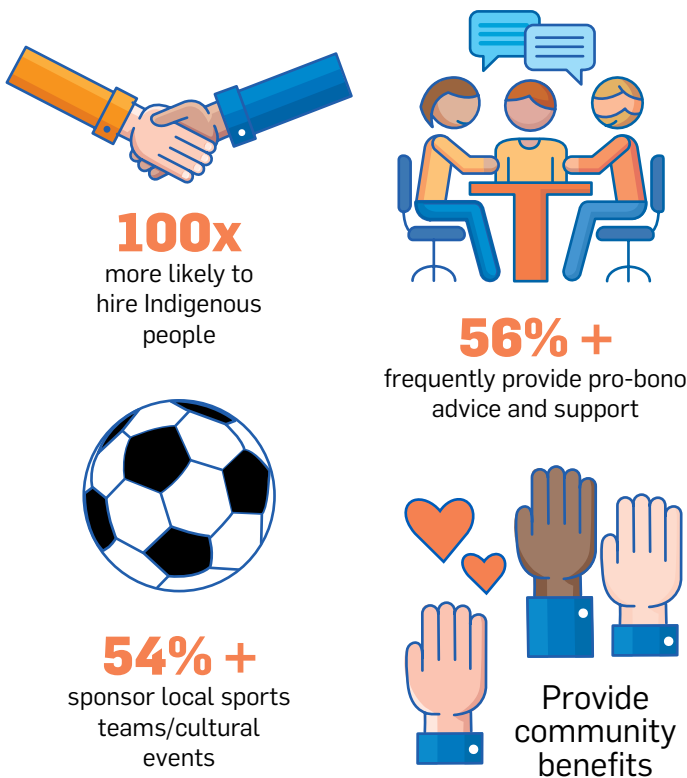
- **The Closing the Gap Implementation Plan<sup>1</sup>** which aims to support more Aboriginal people into jobs that align with their goals.
- **The OCHRE Plan<sup>2</sup>** which recognises the key role of business in broadening opportunities for Aboriginal communities.

Specifically, Red Bus CDC NSW is committed to enhancing its procurement practices by:

- Creating employment and career development opportunities for Aboriginal people within Red Bus CDC NSW and its suppliers.
- Supporting employment opportunities for Aboriginal people within Aboriginal and non-Aboriginal-owned businesses.
- Driving demand throughout our supply chain for procurement of goods and services from Aboriginal-owned businesses.
- Supporting capacity building of Aboriginal-owned businesses.



## OUR ABORIGINAL PARTICIPATION TARGETS



Our targets are supported by research, showing that Indigenous-led businesses deliver significant benefits to local communities.

Our target include:

- Growing our spend with Aboriginal businesses from 2 to 5% by 2028 (via tier-1 and/or tier-2 suppliers).
- Facilitating two information sessions per year with businesses partners that support Aboriginal procurement.
- Increasing the hiring of Aboriginal staff and apprentices every year.
- Creating a culture that recognises the importance of creating business opportunities for Aboriginal communities. This includes considering Aboriginal businesses and Aboriginal participation in the supply of goods and services to Red Bus CDC NSW when undertaking new sourcing events and/or performance reviews.

Further details regarding our commitment to Aboriginal participation outcomes is also provided in Red Bus CDC NSW's national Reflect Reconciliation Action Plan (RAP) which is available [here](#).

Our vision is to create and maintain a culturally inclusive and educated organisation, while being a partner that supports, understands and respects the aspirations of Aboriginal and Torres Strait Islander peoples.

Figure 1: Benefits of Indigenous business.<sup>3</sup>

1 [Link to the Closing the Gap Plan](#). Red Bus CDC NSW particularly aligns with Priority Reform 5 and Socio-economic outcome 8.

2 OCHRE stands for Opportunity, Choice, Healing, Responsibility, Empowerment. [Link to the OCHRE Plan](#). The plan in part focuses on increasing the participation of Aboriginal people in the economy by increasing Aboriginal employment and the number of Aboriginal-owned businesses and recognises the power of social procurement in delivering positive social outcomes that are of public value.

3 First Nation Capital, and Supply Nation. Indigenous Business Growth - Working Together to Realise Potential. Sept. 2018. [Link to report](#).

# HOW OUR SUPPLY CHAIN SUPPORTS OUR ABORIGINAL PARTICIPATION PLAN?

All Red Bus CDC NSW government contracts have Aboriginal participation targets which includes maximising opportunities in the areas of procurement, working with the business community, and employment initiatives.

Spending with Aboriginal businesses with Tier 1 and Tier 2 suppliers contribute to the achievement of our APP procurement targets, as shown in Figure 2:



Figure 2: Supplier tiers and how our suppliers can contribute to the achievement of our APP targets

**Tier 1** spend means the value of goods and services we procure from Aboriginal-owned businesses. Red Bus CDC NSW also welcomes discussions with partners about how we can work together to improve

the outcomes for Indigenous owned business through supply or development opportunities.

**Tier 2** spend means the value of goods and services procured by our

suppliers from Aboriginal-owned businesses. Red Bus CDC NSW encourages its suppliers to procure from indigenous businesses, Tier 2 spend will be considered when evaluating suppliers.

## Aboriginal-owned business definition

Red Bus CDC NSW uses the NSW Government's definition of Aboriginal-owned business, for consistency we ask all our suppliers to use the same:

"An Aboriginal business is one that has at least 50% Aboriginal ownership and that is recognised through an appropriate organisation, such as Supply Nation, the NSW Indigenous Chamber of Commerce (NSWICC) or Office of the Registrar of Indigenous Corporations. These organisations maintain lists of Aboriginal businesses that are audited and undergo quality assurance." [Source link](#)



## COMMITMENT TO CARBON FOOTPRINT REDUCTION

As a major public transport provider, Red Bus CDC NSW makes a considerable contribution to improving the environment through the efficient use of resources by providing large-scale public transport. We recognise however, that our operations consume resources and has a negative impact on the environment. We are committed to improving our environmental performance and impact.

Our targets contribute to the achievement of the NSW government's commitments towards net zero by 2050.

As such, Red Bus CDC NSW will enhance its procurement practices by:

- Selecting like-minded businesses that understand their corporate responsibility to ensure a sustainable future for the next generations.

- Selecting suppliers that can support Red Bus CDC NSW with reducing its scope 3 emissions in tangible and measurable ways.

Collaborating with businesses willing to spearhead innovative projects to reduce our joint emissions and improve the efficiency of materials used.



# REPORTING AND SELECTION PROCESS

All Red Bus CDC NSW suppliers must provide information regarding their commitment to sustainability and in particular how they can support Red Bus CDC NSW with achieving its targets. This means:

- **For existing suppliers** – you will be asked to report on sustainability outcomes as part of our reporting framework.

- **For new suppliers** – you will be assessed based on your alignment with our sustainability targets and your ability to report on your progress against your contractual requirements.

Sustainability has become a key focus for Red Bus CDC NSW as well as its clients. ESG standards and focus are rising, and a growing number of clients

now require Red Bus CDC NSW to achieve certain sustainability targets (both environmental and social). This means stringent reporting requirements and potential financial penalties for failing to do so. This is why we need our suppliers to support us on this journey towards a sustainable future by raising the level of reporting and standards that we expect from them.

## FREQUENTLY ASKED QUESTIONS (FAQS) FOR SUPPLIERS

### How will this affect my current and/or future contract/s with Red Bus CDC NSW?

Contracts with existing Red Bus CDC NSW suppliers will be maintained. However, new reporting requirements (outlined above) and sustainability assessment will be included in the contract review for key suppliers. We advise that you prepare for demonstrating your capability to support us in this area.

### What do I need to do now?

In the coming months, Red Bus CDC NSW will send out requests for information, we kindly ask our suppliers to respond in a timely manner. Such requests may include:

- SME status.
- Indigenous supply status or ability to support Tier 2 spend.
- ADE status.

Feel free to proactively reach out to our procurement team to discuss new opportunities and ideas on how you can better support us.

## GET INVOLVED

Our supply chain plays an important role in our success. This means that suppliers can contribute to creating diverse opportunities and resilient communities. We are seeking to partner with like-minded businesses.

We encourage our suppliers to enhance their procurement practices to increase engagement with Aboriginal enterprises, social enterprises and SME's as part of their supply chain. We want to collaborate with businesses that can support us on our carbon transition pathway.

## BE PART OF SOMETHING BIG

Red Bus CDC NSW is part of the ComfortDelGro Group, one of the world's largest land transport businesses. All Red Bus CDC NSW suppliers play a role in the success of our global operations.

In addition, being one of our suppliers means you are supporting local initiatives that contribute to the NSW's communities, but you also get access to new markets via our national and global teams.



## MORE QUESTIONS?

If you have any questions during this time, please do not hesitate to email our team.

@ [communications@redbuscdc.com.au](mailto:communications@redbuscdc.com.au)

