

Accessible Transport Charter





We acknowledge and pay respect to the past, present and future Traditional Custodians and Elders of this nation and the continuation of cultural, spiritual and educational practices of Aboriginal and Torres Strait Islander peoples.

Artwork: Luke Penrith, Connecting to Country and People, 2022



Our Transport Access Mission

At Red Bus CDC NSW we believe that accessible public transport is integral to people's lives. We recognise and respect the rights of all customers travelling with us and wish to contribute to their mobility and wellbeing as effectively as possible.

Our mission is to understand the ongoing needs of all our customers and take the right steps to alleviate any barriers for people with special access requirements.

Our commitment to provide accessible transport is based on understanding and managing the following elements:

- Accommodating Customers' Needs
- An Accessible Fleet and Proactive Scheduling
- Better Bus Stops
- Mobility Aids and Assistance Animals
- Accessible Workplaces and Hiring Practices
- Compliance with all Federal and New South Wales legislation covering transport accessibility.



Accommodating Customers' Needs

Red Bus CDC NSW knows the importance of human interaction and promoting a positive community attitude for making accessible journeys safe and enjoyable.

Upon commencing employment with Red Bus CDC NSW, our drivers are trained to work with customers of all needs and physical abilities. To maintain their knowledge, they are provided with ongoing training, covering a wide range of customer interactions, on a regular basis.

As part of our initiative to better serve customers with special requirements, Red Bus CDC NSW has implemented 'Red Bus CDC NSW Priority Seating' in our buses. These seats are at the front section of each bus and identified through distinctive seat coverings and signs to encourage customers to offer their seat to someone who might need it more.

This initiative reduces the risk of slips, trips and falls for those who are more vulnerable within our communities.

Red Bus CDC NSW provides all trip information in an accessible format, both in print and on its websites. Red Bus CDC NSW's websites are designed to meet accessibility requirements.

To find better ways to serve customers with accessibility requirements, Red Bus CDC NSW regularly seeks feedback from customers through surveys and extensive third-party research into delivering a better overall customer experience. It also works with its partner, Transport for NSW, to understand accessibility issues that arise from the greater public transport network.



An Accessible Fleet and Proactive Scheduling

All Red Bus CDC NSW route buses meet accessible vehicle standards.

These buses feature 'kneeling' suspension which reduces the step height to the cabin, an extending wheelchair ramp for level entry and a flat, no-step floor to make it easier for less mobile people to board and alight the bus.

In addition, all new buses have priority seating and improved destination signs.

A limited number of dedicated school services may be delivered on non accessible buses.

Should a student require an accessible bus, we will ensure that an accessible bus is used on the school service. An individual or school can request an accessible bus via our customer service team and our scheduling team will ensure one is allocated to the school route.





Better Bus Stops

We believe that accessibility begins before customers board the bus.

Red Bus CDC NSW continuously monitors the condition of the bus stops in its regions and proactively engages with local councils to help make improvements. These activities are geared to help local councils ensure that bus stops are suitable for all customers' needs and abilities and are compliant with the Disability Discrimination Act and the Disability Standards for Accessible Public Transport.

In addition to conducting numerous ongoing field audits, Red Bus CDC NSW is also working with Transport for NSW and local councils to:

- roll out improved wayfinding and indicators, including braille signage and tactile tiles
- provide improved accessible boarding points, including areas with challenging, mountainous terrain
- provide detailed reviews of bus stop infrastructure recommending new stops while rationalising unused or redundant stops, for more effective placement of accessible infrastructure.

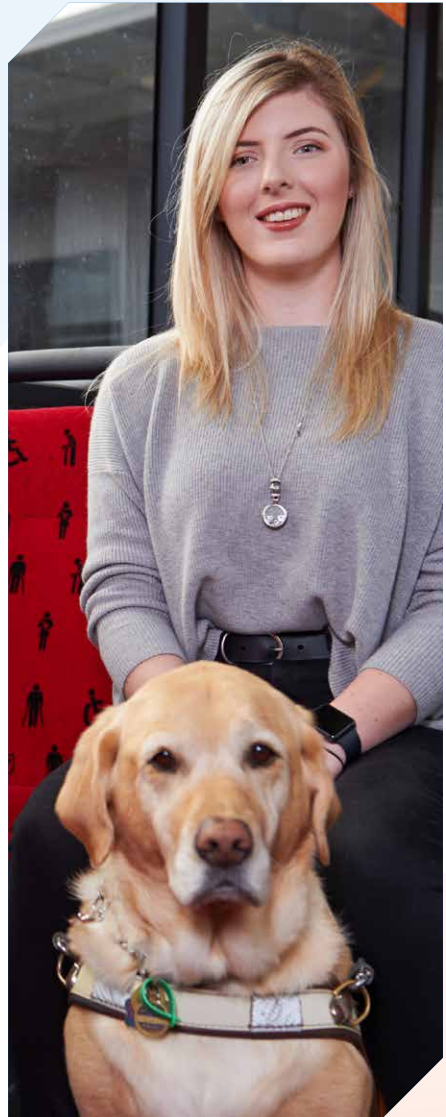


Mobility Aids and Assistance Animals

Red Bus CDC NSW recognises the importance of mobility aids and assistance animals in helping people to enjoy their independence, and employs measures to integrate their use with its services.

Red Bus CDC NSW regularly works with representatives from organisations such as Guide Dogs Australia to help customers familiarise themselves with accessing our vehicles, so they can benefit from more independence.

To travel safely on our services, mobility aids (wheelchairs, electric scooters, or motorised vehicles) must conform to the requirements that are published on our website.





Accessible Workplace and Hiring Practices

Red Bus CDC NSW recognises that it can make a valuable contribution to the communities it serves by providing decent work for all women and men, including those requiring accessible conditions.

In addition to fostering a positive attitude among its workforce, it employs strategies to assist people with disabilities including:

Workplace adjustment methods to facilitate specific needs, including:

- alternate technologies
- flexible working arrangements
- regular surveys of staff disability profiles.

Red Bus CDC NSW works with a range of disability employment agencies to proactively provide opportunities, to create a positive impact on the community.

Red Bus CDC NSW aims to be an employer of choice for people with disabilities which offers meaningful employment – from driving and bus depot roles through to professionals and management – by removing barriers and actively seeking employees with disabilities.



Compliance

As a part of meeting the accessibility needs of all customers, we maintain compliance with the following regulations:

- Disability Discrimination Act 1992 (Commonwealth)
- Disability Standards for Accessible Public Transport 2002 (Commonwealth)
- Anti-Discrimination Act 1977 (NSW)
- Principles in Schedule 1 of the Disability Services Act 1993 (NSW)
- Guidelines for Disability Action Planning by NSW Government Agencies.



How to contact us

For all enquiries, feedback or to share with us your experience, please:

Call **131 500** or

Email communications@redbuscdc.com.au

A full list of our depots can be found on our website redbuscdc.com.au

Other contact information

For trip planning, maps and ticket info visit transportnsw.info or call **131500**.

